

Deans Community High School

How we are ensuring continuity of learning during school closure.....

Responsibility of learners/parents/carers

Responsibilities of teachers



Microsoft Teams

All pupils now have access to Teams for every subject. Login to glow and select Teams or use the Teams app.



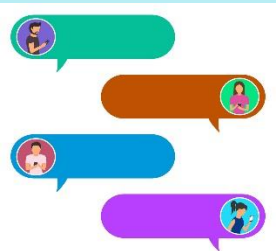
Teachers will introduce pupils to their online lesson and set tasks for that period. Teachers will respond to questions that pupils post and will endeavour to do this during the timetabled period.



Our school timetable remains exactly the same as if you were in school. You should log in to 'Teams' at the start of every lesson, search for your subject and/or your teacher.



If you need to ask questions of teachers outwith the school day, your teacher is more likely to respond during your allocated time.



You should engage in online dialogue with teachers and classmates, submit answers, and return work using the Teams function.



If you forget your Glow password email: wldeans-chs@westlothian.org.uk
This will be reset as quickly as possible.



Interval and lunchtimes should be the same as if you are in school. You should take a break/get a refreshment and be ready to log back in for the next period!



If a teacher is 'absent' and unable to allocate work or you can't get onto Teams, you can access additional materials via the Quick Links button on the school Website and One Drive in Glow.

